

NEXGO UN20

Version 5.1 July 2023

[NEXGOGLOBAL.COM](https://nexusglobal.com)

© 2023 NEXGO | The information contained in this document is subject to change without notice. All pictures shown are for illustration purpose only, actual product and software may vary. NEXGO and the NEXGO logo are either trademarks or registered trademarks of NEXGO in the China and/or other countries. All other trademarks or brand names are the properties of their respective holders.



UN20

Designed for Unattended Payment





UN20 is an innovative unattended payment terminal that can assist you in providing a great self-service experience. It's simple to integrate it into other vending machines and external devices. UN20's excellent performance, dependability, multiple configurations, and interfaces open up endless possibilities.

Excellent Performance

Quad-Core Cortex A53

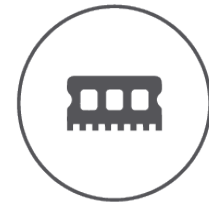
Multiple Configurations

For Multi-Scenarios

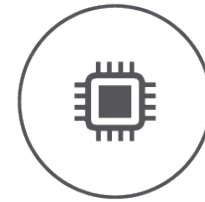
Unattended Payment

Premium Customer Experience

Excellent Performance



2.0 GHz Quad-Core
Cortex A53



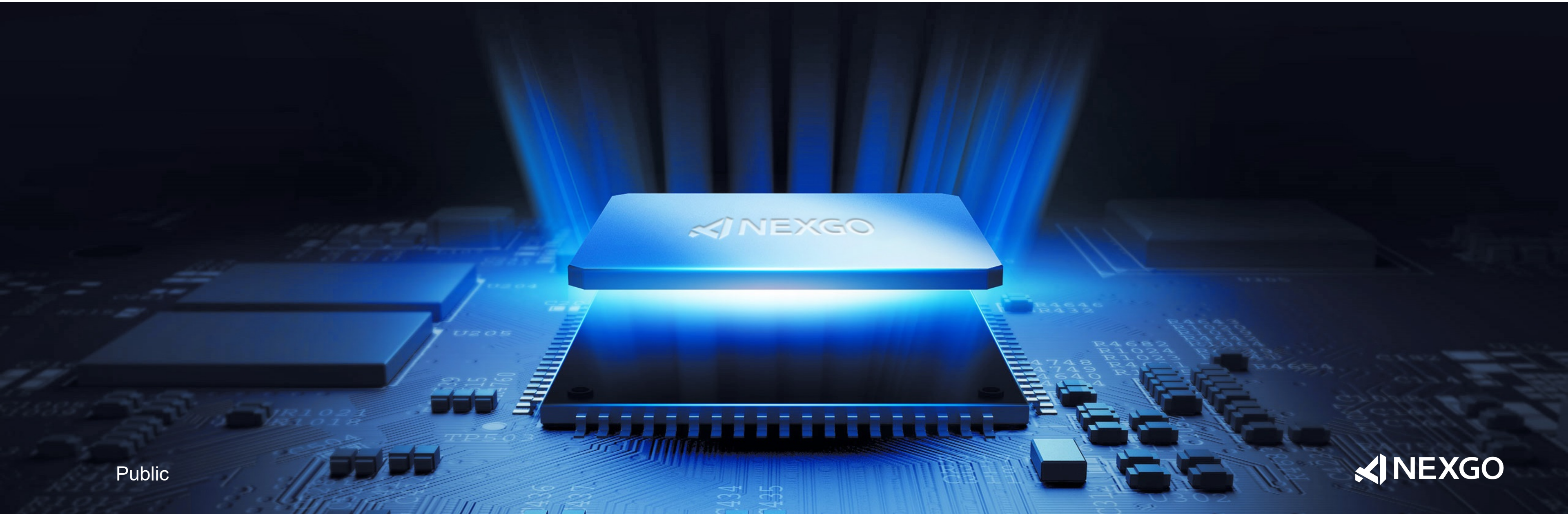
2GB DDR+8GB Flash



Android 11



-20° C to 70° C



Interfaces and Configurations

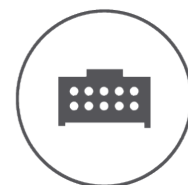
UN20 is equipped with multiple superior interfaces and configurations that allow for endless possibilities.



Sensors



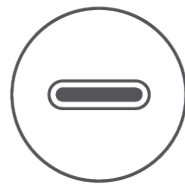
LAN



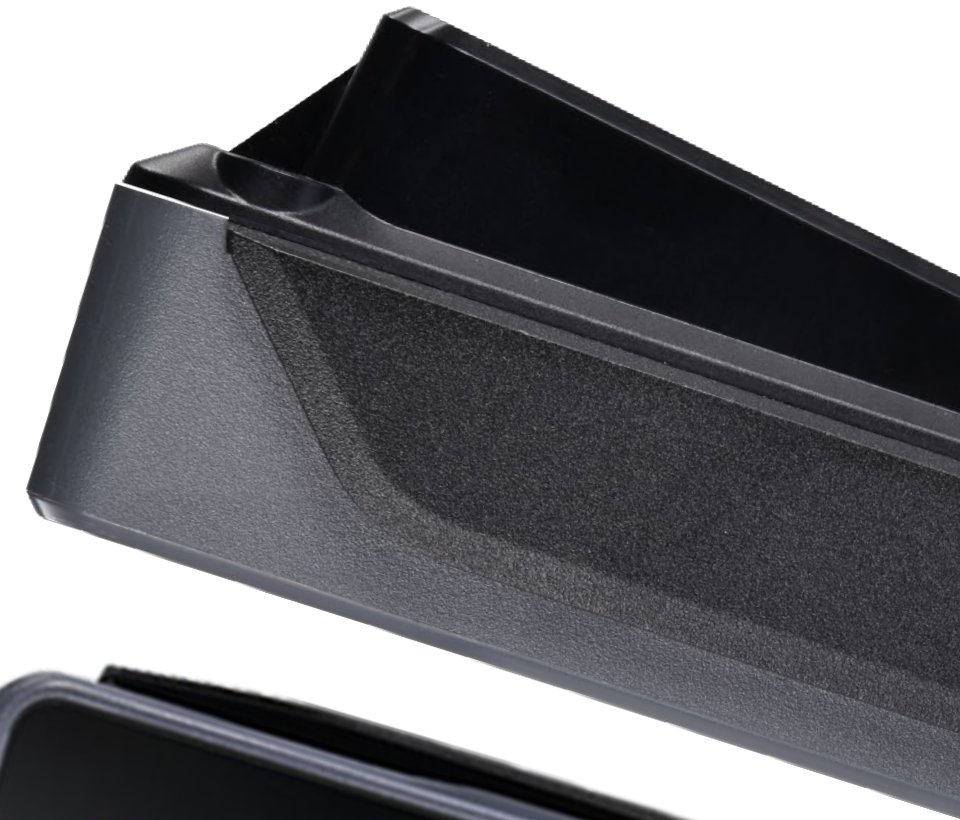
MDB



RS232



USB Type-C





Operate with Gloves

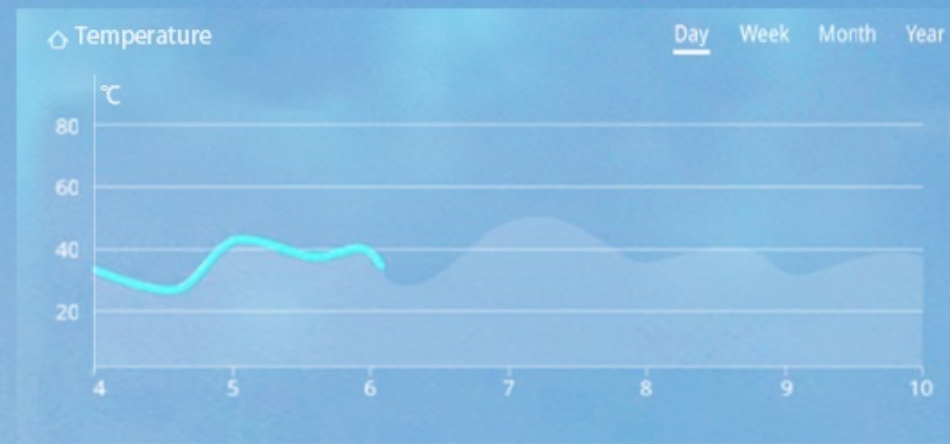
High-sensitivity touch panel ensures the users can operate with gloves even at low temperature.

Weather-Resistant Material

UN20 uses a weather-resistant material that prevents the surface from fading even after 5 years of exposure to sunlight.



1500
hour



Adaptive Brightness

The proximity sensor and light sensor of UN20 wake the terminal while detecting the change of ambient light and the presence of nearby users without any physical contact. It will optimize the power consumption to save energy and protect the environment.



Payment Methods

The clear indicator lights will guide users to settle the payment even in the dark. The camera on the bottom of UN20 conforms user habit when scanning the QR code.

-  Bluetooth
-  Wi-Fi
-  4G



Excellent Reliability

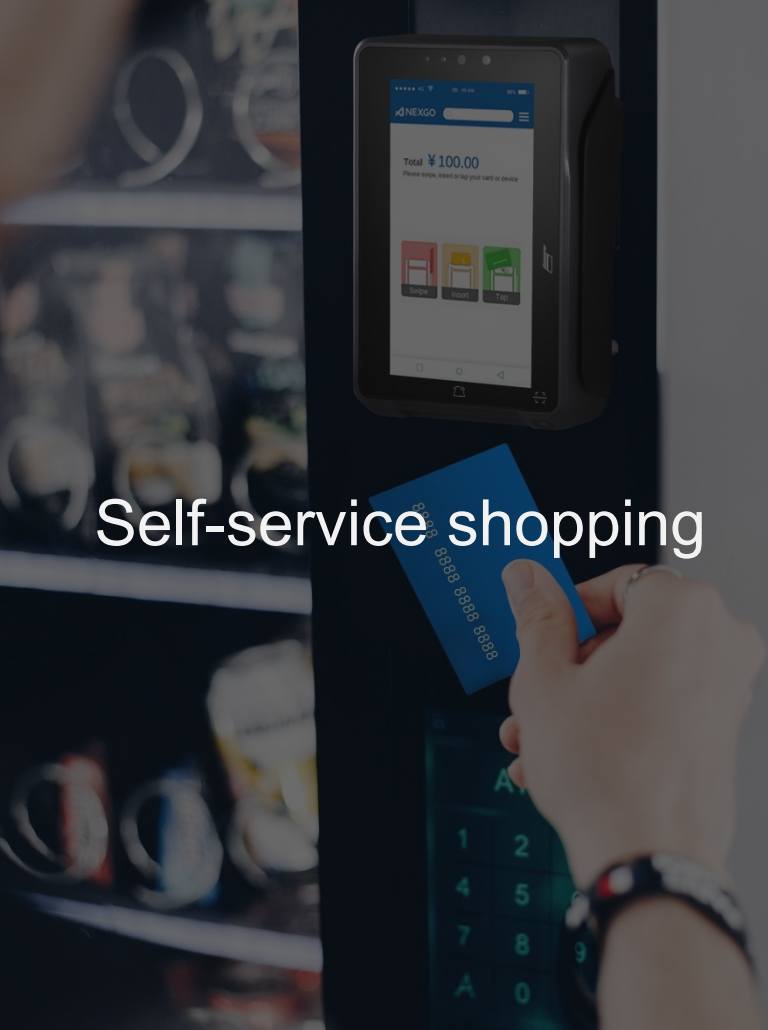
IP65

IK08

-20°C
to 70 °C

ATEX





Self-service shopping



Laundromat



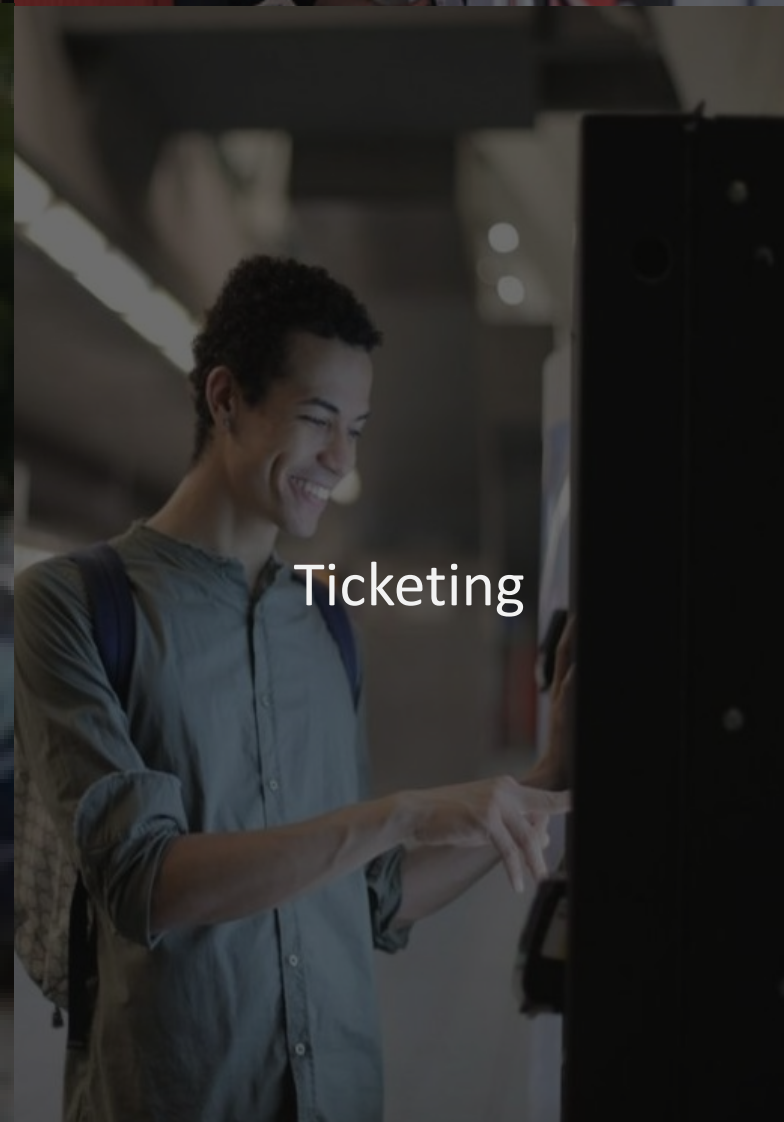
Vending Machines



Gas Station



Parking



Ticketing

Scenarios

The security, stability, and premium that the UN20 provides are applicable in a variety of scenarios, including self-service shopping, laundry, vending machines, gas stations, parking lots, ticketing, and so on.

UN20

Processor Quad-Core Processor Cortex A53, 2.0GHz	Contactless Cards ISO 14443 Type A/B/C	Card Slots 2 x SIM 1 x SD 4 x SAM	Power DC:12~48V(Digital I/O, MDB Slave, Master & Executive), RS232 AC:19~30V(MDB Master & Executive)
Memory 2GB RAM + 8GB ROM	Magstripe Cards Track 1/2/3	Audio Built-in Speaker	Camera Front: 2MP Bottom: 2MP
Display 5.0", 1280*720, HD Capacitive Touchscreen, Multi-Touch	IC Cards ISO7816	Peripheral Ports 1 x USB Type-A, 1 x USB Type-C 1 x LAN, 2 x RS232 1 x MDB Master & Executive, 1 x MDB Slave 1 x Digital I/O, 1 x SMA	Physical 146*101*57mm Cutout size: 108.7mm*86.4mm
	Positioning GPS, BEIDOU or GLONASS		Waterproof and Dustproof Match IP65 standard
Operating System Based on Android 11	Communication 4G Wi-Fi LAN Bluetooth	Certifications PCI 6.x, EMV L1&L2, EMV CL1, QPBOC L1, Quickpass, Paypass, Paywave, TQM, JCB, Discover, Amex. IP65, IK08, ATEX, CE, RoHS	Environmental Operating Temperature : -20°C to 70°C Storage Temperature : -30°C to 80°C Relative Humidity : 10% to 95%(Non-Condensing)

THANK YOU!

[NEXGOGLOBAL.COM](https://nexgoglobal.com)

© 2023 NEXGO

